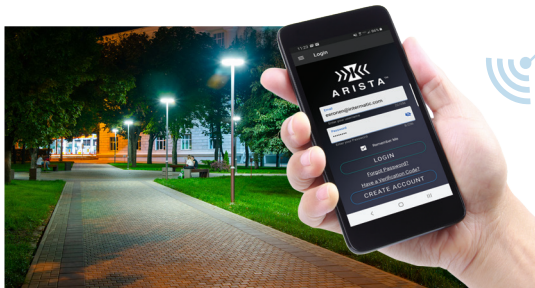




ARISTA
NIGHTSCAPE

Simple. Scalable. Wireless.

Bring comfort and safety to outdoor spaces with the **ARISTA Nightscape Lighting Control System**. The customizable system combines locking-type controls and smart presence sensors with Bluetooth mesh technology to create dynamic lighting environments that are occupant-friendly and code compliant. This is done all without a gateway or central control unit.



Easy Setup

Use the ARISTA Nightscape mobile app to configure sensors and controllers, adjust lighting schedules and monitor performance on the go.

Robust Control

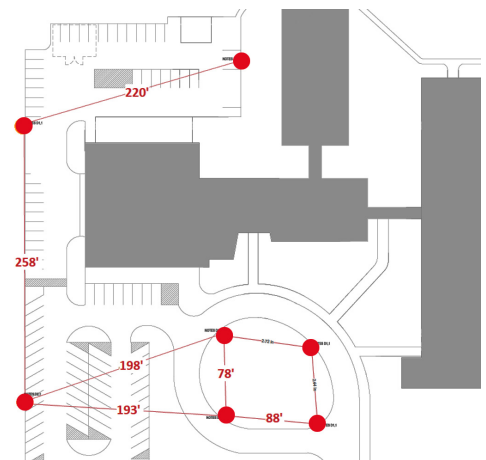
Tailor ON/OFF, sensor presence overrides and part-night dimming schedules for different areas and occupant needs in large outdoor environments.

Applications:

- Commercial buildings
- Schools
- Parking lots
- Parks

Contact your local Intermatic representative to be the first to demo the new ARISTA Nightscape Lighting Control System. Available soon!

[Intermatic.com/ARISTA](https://www.intermatic.com/ARISTA)



Example Application:

U-Shaped parking lot with a roundabout outdoor area at a primary school.

[Intermatic.com](https://www.intermatic.com)      

Intermatic Incorporated Libertyville, IL 60048

©2020 Intermatic 300AR10002

